

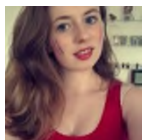
## November 2016 PTO Newsletter

### Intern Update and Profiles

The Intern Program needs your help! Unfortunately, we've recently learned that a couple of host families are no longer able to host an intern in the spring due to circumstances beyond their control. Host families provide room and board and transportation to and from school; the time frame for hosting in the spring would be from mid-January until mid-June. If you have been thinking about hosting and are able to help out, please email Tracie Bernard at [tracie.bernard@lnfi-pt.org](mailto:tracie.bernard@lnfi-pt.org) for more information or visit the "Intern Program" section at [www.lnfi-pt.org](http://www.lnfi-pt.org).



My name is **BENJAMIN TARDIEUX**, but I love when people call me Benjy. It sounds cooler to me! I was born on July 14, 1990, during our National Day. So my birthday is always fantastic: fireworks, flags, music everywhere. I am 26 years old. I passed with honors 7 years of studies at UPEM University, close to Paris, and very close to Disneyland Paris! My Grandmother is Spanish, so I have 25% Spanish Blood: I am very proud of being French Latino! I speak French, English, and German. I am a very positive, nice, and energetic person. I just enjoy life in general. I have been teaching for Education Nationale for the last 4 years. I love teaching! This new experience is awesome because it will help me to improve my way of teaching, learning new methods, receiving pieces of advice, and compare the French education system with the American one. Learning new teaching skills for me is exciting! Moreover, I love meeting people and discovering new places, new traditions and habits. I enjoy working with kids and sharing my knowledge. (Benjy works with Mme Faltesek.)



My name is **CLAIRE DESTANQUE**, and I'm 21 years old. I'm French, and I live in Rambouillet, a little cute city near to Versailles. I have two little brothers, one bunny, and soon one baby cat. I am finishing my third year in Collège, and after the internship I want to get a master's degree in education to become a primary school teacher. It's the profession that I always wanted to do; for me, it's a vocation. The internship at L'Étoile du Nord will be a good way for me to continue to learn how to take care of the students in class. It's also a good way to learn about a different method of education and obviously to improve my English with my host family. Furthermore, I want to know another culture than mine, and I like the USA culture (I spent one month in the US last year), so it was the perfect opportunity. My hobbies are rhythmic gymnastics (I have been a teacher of rhythmic gymnastics in France for four years and also a gymnast since 2005), sport in general, travelling, reading, going out with friends, cooking, and going to cinema. (Mlle. Destanque works with Mmes Solachava and Tavernier.)

### Staff Appreciation Potluck Lunches

During conferences, the PTO hosts Staff Appreciation Lunches on evening conference days (Tuesday, November 15, and Thursday, November 17). LNFI families bring potluck items to help sustain the teachers and staff through the long conference days! If you can volunteer to bring a food item or to help set up or clean up the potluck, please sign up at [www.lnfi-pt.org/volunteer](http://www.lnfi-pt.org/volunteer) (look for the Staff Appreciation Potlucks tabs – there is one for each campus). Food items can be dropped off at school any time before 11 a.m. This is a great way to show your support if you drop your child off at school or you can send something with your child on the bus.

### November PTO Meeting Lower Campus Library

Thursday, November 10, 6 p.m.

Childcare is provided in the gym for toilet-trained children.

### Give to the Max/Direct Donations

November 1 – 12

More information is available at [www.lnfi-pt.org](http://www.lnfi-pt.org).

### Book Fair Shopping Hours

Tuesday, November 15, 4 p.m. to 7:30 p.m.

Wednesday, November 16 (**Upper Campus Only**), 9:45 a.m. to 3:50 p.m.

Thursday, November 17, 4 p.m. to 7:30 p.m.

Friday, November 18, 8 a.m. to 2 p.m.

### Staff Appreciation Potlucks

Tuesday, November 15,

Thursday, November 17

**Please drop off food by 11 a.m.**

### Picture Retake Day

Thursday, November 17

### Direct Donation Appeal

Thank you to everyone for your participation in our fall appeal. We raised an estimated \$12,000 for our children, which can provide for two interns next year! We celebrated in many classrooms with beads, extra recess, and popsicle and popcorn parties. Your support makes LNFI a school of excellence and fun.

### Halloween Family Dance

Thank you to everyone who attended or volunteered at the dance! We counted 241 LNFI students, but there were many more kids who came with current students. M. Gasho's class had the most students (16) and will get a root beer float party.

### No School Days

Friday, November 18

Thursday, November 24

Friday, November 25

### December 8 PTO Meeting, 6 p.m.

#### Lower Campus Library

French Immersion Pathway through Ramsey Middle School and Central High School

**December 8 PTO Meeting – The French Immersion Pathway after LNFI.** This meeting will be all about the French Immersion pathway through St. Paul Public Schools! Staff from Ramsey Middle School and Central High School will be present to discuss their programs. Parents and current students at those schools will also be on hand to talk about the programs. In the words of one current parent and SPPS teacher – “Ramsey is a thriving middle school with excellent teachers and a very supportive administration. We would love to see more LNFI families sending their children there!” If you are a Ramsey or Central parent and would like to participate, please send an email to [becky.erickson@lnfi-pt.org](mailto:becky.erickson@lnfi-pt.org).

**Scholastic Book Fair.** The book fair will be open during conferences on November 15, 17, and 18. To shop online from November 9-22, go to [www.scholastic.com/bf/letoiledunordfrenchschool2](http://www.scholastic.com/bf/letoiledunordfrenchschool2). **\*Upper Campus Daytime Student Shopping, Wednesday, November 16 (there will be no daytime shopping at Lower Campus).** Please send money in an envelope marked “BOOK FAIR” and the amount of money, as well as a note about any buying restrictions. Books generally cost \$4-\$25. Volunteers help the students shop.

**\*Volunteering.** We need volunteers to help students and families find and purchase books and to set up/pack up. If you would like to help for a one-hour shift, please look at the times and date available and sign up at [www.lnfi-pt.org/volunteer](http://www.lnfi-pt.org/volunteer). If you have questions about volunteering, please email [becky.erickson@lnfi-pt.org](mailto:becky.erickson@lnfi-pt.org). **\*Used Book Sale at Lower Campus.** We also sell donated, used books at the Lower Campus. You can drop off used books in the office before the sale starts or bring them to the book sale. All used books cost 25 cents.

**Community Support: Give to the Max – November 17.** Between now and the 17<sup>th</sup> hundreds of schools and non-profits will be asking Minnesotans for their support. Please ask your friends, neighbors, and extended family to make a donation to the LNFI PTO at <https://givemn.org/organization/Lnfi-Pto>. (Sample text will be sent home in backpacks.) Each Give to the Max donation could turn into \$1,000 through GiveMN’s hourly drawings, and one donation made during Give to the Max will be randomly selected to receive a \$10,000 dollar prize!

**Intern Host Families for 2017-2018.** It’s not too soon to consider hosting an intern for the 2017-18 school year! Visit [www.lnfi-pt.org/content/lnfi/interns](http://www.lnfi-pt.org/content/lnfi/interns) for more information. All costs associated with the intern program are paid for by the PTO.

**Box Tops for Education.** Thank you to all the families who turned in Box Tops! \$435 worth of Box Tops were collected. After the fall collection, the rankings are: 1) Mme Gagnaire (649), 2) Mme Swann (459), and 3) Mme Tavernier (262). When you turn in Box Tops, don’t forget to label the bag with the teacher’s and student’s names. (At the end of the year, the class collecting the most Box Tops will get a pizza party!)

**PTO Budget and Fundraising.** To date, the PTO has raised approximately \$18,000 to support its programs for the 2017-2018 school year. Thank you for your generosity! This year we have 10 interns. It costs about \$6,000 to bring in each intern (for a total of \$60,000). We hope to have 10 interns next year. It’s very important for our kids that they receive the personal attention that teachers plus interns can give. Reaching our 2017-18 goal of 10 interns depends on us raising the money this year. So, if you indicated that you are going to make an on-line donation to the PTO, but just haven’t gotten around to it yet, now is a good time to circle back and make that donation. Likewise, if you can reach out to family, friends, and neighbors and ask them to make a donation during Give to the Max, now is the time to do it. Merci!

**PTO Website and Facebook.** The PTO tries hard to keep the website, [www.lnfi-pt.org](http://www.lnfi-pt.org), up-to-date with information about upcoming events, the direct donation link, fundraising opportunities (like Box Tops and Labels for Education and Amazon and Shutterfly partnerships), backpack flyers, and the family directory. The PTO also has a Facebook page, [www.facebook.com/lnfipto](http://www.facebook.com/lnfipto) where we post information about upcoming events.

**PTO Meetings – Second Thursday of the Month.** PTO meetings are held the second Thursday of the month in the Lower Campus library at 6 p.m., unless otherwise noted. Childcare is provided in the gym for toilet-trained children.

**PTO Directory.** If you aren’t in the directory (or don’t know if you are), aren’t receiving PTO or class liaison emails, never set up a password, or lost your password, send an email to [communications@lnfi-pt.org](mailto:communications@lnfi-pt.org).

**Amazon.** If you make purchases on amazon.com, please use the PTO’s Amazon link every time you shop:

<http://www.amazon.com/?tag=lnfipto-20>. The LNFI PTO is an Amazon Affiliate and earns money from all purchases made via this link. (This link is different than the AmazonSmile link, which doesn’t earn as much money for the PTO.)

**Shutterfly.** <http://lnfipto.shutterflystorefront.com/> Bookmark this link to print photos or create cards, photo books, invitations, and more. Shutterfly will donate 13% of purchases to the LNFI PTO.

**Questions?** Send an email to [communications@lnfi-pt.org](mailto:communications@lnfi-pt.org), and we’ll direct you to the right person to answer your questions!